

## SCHOOLS AT IKON

Ikon Gallery welcomes all educational groups. We offer tours and workshops, plus free online resources including activity packs.



**IKON**

# FREE RESOURCES

## **Exhibition Guide**

Highlighting key themes of the exhibition.

## **Information Assistants**

Available in every gallery for further conversation.

## **Art Explorer**

Encouraging the whole family to explore Ikon together.

## **Resource Room**

Containing artists' books, films, colouring sheets and early years / family activities.

## **Online Activity / Student-Teacher Packs**

Designed by artists for creative learning at home or in the classroom.

## **Digital Resources**

Including interviews with artists, virtual tours, audio guides.

**ONLINE ACTIVITY PACKS**





# TOURS

## Open to all educational groups

**Guided exhibition tour, 60 minutes – £30**

**Self-guided tour – FREE**

**Available Tuesday–Friday**

Advance booking is essential for both guided and self-guided tours. Maximum 30 students.

Guided tours are led by our experienced Information Assistants who encourage visitors to explore Ikon's exhibitions, focusing on how we look at art, ask questions and share ideas.

Ikon is an educational charity and we believe that art galleries should be spaces for everyone to enjoy. Our Education Team is proud to meet the needs of all learners.

**BOOK NOW**



# WORKSHOPS

## *What is a gallery?*

**£120**

**Available Tuesday–Friday, booking essential  
2 hours, maximum 30 students**

This workshop introduces students to art galleries and different art forms, aiming to develop students' creative and critical thinking skills when talking about and making art.

Students enjoy a tour of the galleries including discussions and activities on themes specific to the exhibitions. This is followed by a practical session where students will create their own artwork.

**Skills include but are not limited to:** drawing, painting, colour mixing and modelling.

**BOOK NOW**



## *Develop your art skills*

**£150**

**Available Tuesday–Friday, booking essential  
2.5 hours, maximum 30 students**

This workshop encourages students to connect Ikon's current exhibitions and their own approaches to making art. Perfect for students who want to learn or develop specific techniques.

A guided tour is followed by a practical session where students create art in response to the exhibitions, with consideration of the themes and ideas addressed during discussion.

**Skills include but are not limited to:** drawing, painting, mark making and printing.

**BOOK NOW**



## *Discover creative careers*

**£150**

**Available Tuesday–Friday, booking essential  
2.5 hours, maximum 30 students**

This workshop introduces students to creative careers and pathways into the arts and cultural sector.

A guided tour is followed by a practical session and series of discussions where students will learn about the role of a gallery and its different departments including: exhibitions, education, communications, development and operations.

Students have the opportunity to speak to Ikon staff and draw on their knowledge and experience of working in the sector.

**BOOK NOW**



**Speak to our Education Team about how these workshops can support curriculum areas.**



# CPD, TEACHER TRAINING & ADULT LEARNING

Ikon regularly hosts CPD sessions for teachers at all levels. These can be tailored to meet the needs of your faculty or department.

PGCE students, U3A and informal study groups are all welcome. Get in touch to discuss your visit or arrange a workshop.

[CONTACT](#)





# BCU TUESDAYS

An innovative new partnership with Birmingham City University (BCU) which enables Ikon Gallery to open on Tuesdays for a year (October 2024 – September 2025).

On *BCU Tuesdays*, school and college students are welcomed to Ikon for interactive workshops, delivered in collaboration with BCU subject leads, BCU student ambassadors and the Ikon Education team. Sessions introduce Key Stage 4 and 5 learners to the breadth of creative study opportunities at BCU, from Fine Art to Fashion, Photography and Arts Education.

Ikon also facilitates free *BCU Explore Days*, delivered by BCU Art, Design and Media staff to introduce Key Stage 4 and 5 students to the creative industries.

In Summer 2025 Ikon and BCU will co-produce a Creative Careers Fair, showcasing professional development and employment opportunities within the West Midlands' arts and cultural sector.

Contact [schoolsandcolleges@bcu.ac.uk](mailto:schoolsandcolleges@bcu.ac.uk) for more information and to enquire about booking your school for *BCU Tuesdays*.





## Mahtab Hussain

### *What Did You Want To See?*

**Spring–Summer**  
**20 March – 1 June 2025**

British artist Mahtab Hussain explores the fine line between photographic documentation and surveillance culture, addressing the intelligence sites established by the media and the state to monitor the Muslim community in Britain.

Commissioned by Ikon and Photoworks, the exhibition features new work, including Hussain's systematic documentation of 160 Birmingham mosques; portraits of Birmingham residents; and the installation *What Did You Want To See?* which simulates a space under surveillance.

**Key themes:** Community, Surveillance, Religion  
**Method:** Photography, Video, Installation

[READ MORE](#)



## Htein Lin

### *Escape*

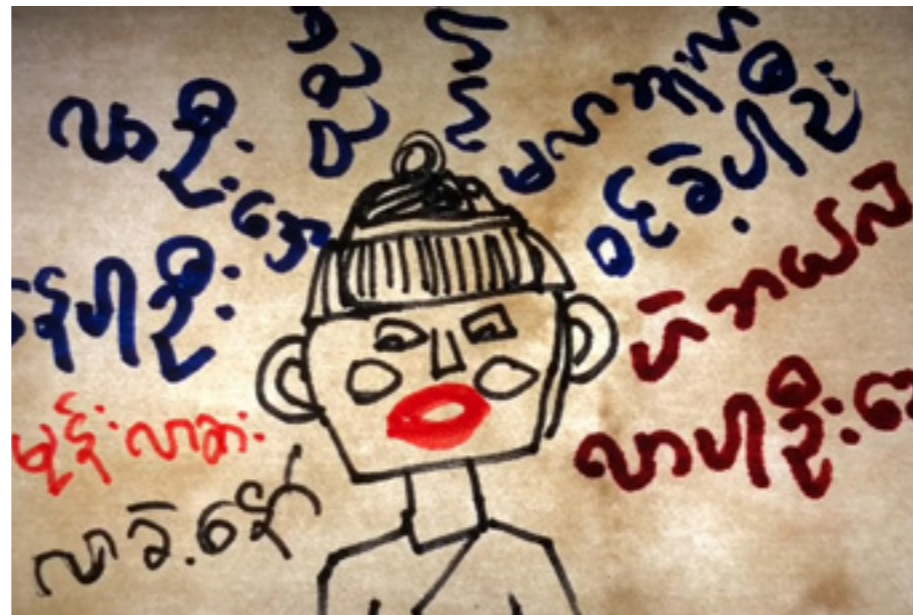
**Spring–Summer**  
**20 March – 1 June 2025**

A major solo exhibition by multidisciplinary artist Htein Lin from Myanmar.

Evoking his lifelong commitment to documenting human experience in difficult times, it shows a comprehensive selection of the artist's paintings made while he was a political prisoner from 1998 to 2004 on prison uniforms and found textile, alongside drawing, sculpture, video and new work. Htein Lin also makes new artworks with residents of HMP Grendon, Buckinghamshire, exploring prison art in Britain and Myanmar.

**Key themes:** Justice, Freedom, Prison Art  
**Method:** Painting, Printmaking, Video

[READ MORE](#)



## Seulgi Lee

**Summer–Autumn**  
**25 June – 7 September 2025**

Born in Seoul and living in Paris since 1992, Seulgi Lee's artwork is shaped by the use of colour, gesture, simple yet elegant forms and performance.

Intrigued by the relationships between language systems, form and function in traditional crafts, Lee has developed a unique sculptural vocabulary, in which she often combines conceptual approaches with artisanal methods. For her first solo exhibition in the UK, Lee presents an ongoing series and new pieces commissioned by Ikon.

**Key themes:** Language, Form, Craft  
**Method:** Textiles, Sculpture, Installation

[READ MORE](#)



# Thread the Loom

**Summer–Autumn**

**25 June – 7 September 2025**

Ikon celebrates the medium of weaving by bringing an AVL Studio Dobby loom on-site to the gallery and activating it through a series of micro-residencies with West Midlands weavers and artists.

Combining the tradition of hand weaving and computer-aided design, and organised in partnership with the Textile Design department at Birmingham City University (BCU), the exhibition sees the weavers and artists experiment with materials and structures to create textiles that speak to the past in defining a sustainable future.

**Key themes:** Craft, Heritage, Community

**Method:** Weaving, Textiles, Installation

[READ MORE](#)



# Donald Locke

**Autumn–Winter**

**1 October 2025 – 22 February 2026**

The first major survey of Guyanese-British artist Donald Locke (1930 – 2010). Born and raised in Guyana, Locke moved to the UK in 1954 as part of the Windrush Generation.

The exhibition includes early ceramics inspired by natural forms and the human body, and larger scale paintings and sculptures exploring issues around history and identity.

**Key themes:** Identity, History, Empire

**Method:** Painting, Sculpture, Ceramics

[READ MORE](#)



Image credits:

Mahtab Hussain, *Birmingham Central Mosque, Birmingham* (2024). From the series *What Did You Want To See?* (2024). Digital C - Type print. Courtesy Mahtab Hussain.

Htein Lin, *When I was a Lousy Millionaire* (2022). Video, colour, sound, 24:56 minutes © Courtesy the artist.

Seulgi Lee, *SLOW WATER*, exhibition view, Incheon Art Platform (2021). Image courtesy the artist and Incheon Art Platform.

AVL Studio Dobby loom, Birmingham City University (2024). Image courtesy Ikon. Photo by Tegen Kimbley.

Donald Locke, *Plantation Series X/1* (1973). Ceramic, steel, vinyl, formica. 32 × 25.5 × 28 cm, 12 5/8 × 10 × 11 in. Courtesy Estate of Donald Locke and Alison Jacques, London. © Estate of Donald Locke. Photo: Michael Brzezinski.



Ikon Gallery, Brindleyplace, Birmingham, B1 2HS  
0121 248 0708 / ikon-gallery.org

Open Tuesday–Sunday, 11am–5pm  
Free entry, donations welcome

Stay in touch  
Subscribe to our e-bulletin at [ikon-gallery.org](http://ikon-gallery.org)

 @ikongallery

#### Artsmark

Ikon is proud to be working in partnership with schools and settings on their Artsmark Award journey.

#### Arts Award

Ikon is an Arts Award centre with members of the Education Team who are trained to deliver Arts Award at any level as part of a visit to the gallery.

To find out how Ikon can support your Artsmark or Arts Award journey, or for more information about our schools offer, contact the Education Team on 0121 248 0708 or email [education@ikon-gallery.org](mailto:education@ikon-gallery.org)

Ikon is supported using public funding by the National Lottery through Arts Council England.

Ikon Gallery Limited trading as Ikon.  
Registered charity no. 528892.



**IKON**

 Supported using public funding by  
**ARTS COUNCIL  
ENGLAND**