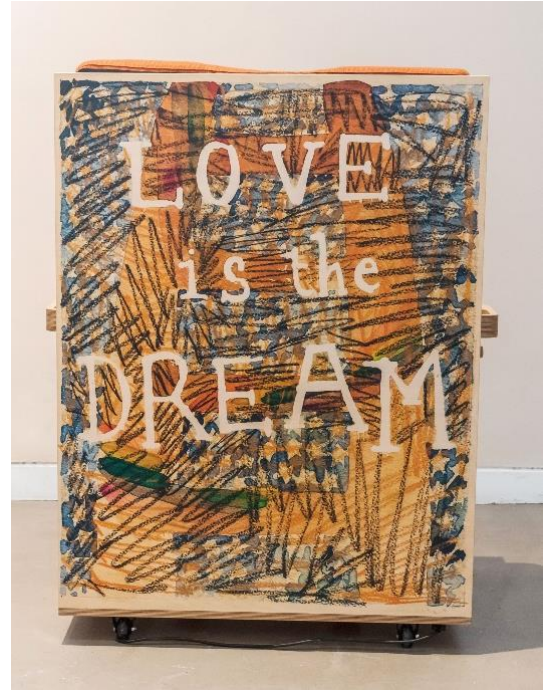


# IKON

## Feed @ Ikon

Artist Residency



Residency dates: 5th June – 7th July 2024

Deadline for applications: 5pm on Wednesday 7th February

In  
Certain  
Places

# IKON

 **Birmingham**  
City Council

 **ARTS COUNCIL**  
ENGLAND  
LOTTERY FUNDED

Supported using public funding by  
**ARTS COUNCIL**  
ENGLAND

 **University of**  
Central Lancashire  
UCLan

# Artist Residency Brief

The Feed artist residency is a collaboration between Ikon, Birmingham City Council and In Certain Places

## About Ikon

Ikon is an internationally acclaimed art gallery in central Birmingham, offering free entry to all. Founded in 1964 as an artist-led alternative space, it has evolved into one of the most internationalist programmes in Europe, combining established with emerging artists. Housed in a renovated neo-gothic school building, Ikon is an educational charity for the promotion of visual art of international significance, playing a key role in the cultural life of the West Midlands region.

## About Birmingham City Council

Working in partnership with Birmingham City Council Public Health, Ikon seeks to improve understanding and impact of an art gallery on public health. A two-year research project, conducted across 2024–25, will support Birmingham City Council's ambition to become a 'Bolder Healthier City'. Working with a range of internal and external stakeholders – education, cultural and community partners across various districts – a Public Health Research Officer will use a methodology based in co-design, from problem formulation through to the dissemination of findings across four primary areas: migration and transnational identity, older people, families and young people and criminal justice. This includes projects working with communities at HMP Grendon, HMP Birmingham, Handsworth Library and projects in collaboration with the Living Well Consortium, Birmingham Hospice and Feed.

## About In Certain Places

[In Certain Places](#) is a public art research project based at the [University of Central Lancashire](#) in Preston. We create artworks that challenge how we understand and experience places and foster long-term change by connecting institutions and communities.

## About Feed

Feed is an arts-based project that promotes inclusive, sustainable approaches to infant feeding and public space. Working with cultural venues, public health teams, artists and communities, we want to create opportunities for people to share their experiences of feeding their babies in public and to challenge negative social attitudes towards human milk, feeding bodies and parenting.

During June 2024, Ikon will host a multimedia feeding chair, created as part of Feed, within the Resource Room, located on the gallery's Second Floor. The feeding chair is decorated with bespoke artwork by [Jade de Montserrat](#) and includes an iPad and speakers in the headrest. Sitters can listen to specially commissioned audio artworks by [Magda Stawarska](#), [Nicola Singh](#) and [Krissi Musiol](#), about feeding, resting and public space, or watch talks about infant feeding by cultural historian [Dr. Joanna Wolfarth](#), Design Researcher [Sally Sutherland](#) and 'Diversity in Infant Feeding' founder [Louise Oliver](#). As well as Ikon, the chair will tour to 6 venues across the UK between January 2024 and December 2025 in Leeds, Bristol, Scarborough, Cardiff, Preston and Glasgow.

### **Feed artist-in-residence**

Whilst it is hosting the chair, we plan to transform the Ikon's Resource Room into a welcoming and comfortable environment for families and feeding people and use it as the base for an artist residency. The residency is open to artists who are based in Birmingham and the surrounding areas at any stage of their career and working in any discipline (including writers, musicians, designers, dancers, visual artists, socially engaged artists and those working with sound, moving image etc). Artists will be invited to respond to the specific focus of Feed (i.e. infant feeding in public) and/or some of the wider themes explored by the project (such as care, gender and public space) and will be encouraged to engage with visitors to the space. Artworks created during the residency may be presented in the Resource Room and sound, videos, animation and writing can be integrated into the chair for audiences at subsequent venues on the tour.

As part of the project, the artist will be invited to work with the Feed team to develop a small programme of community events. Feed project curators Elaine Speight and Erin Singleton, breastfeeding specialist and lactation consultant Brianna Dymond and the Ikon team will provide advice and support throughout the residency period.

### **Timescale**

Ikon is open Wednesday – Sunday between 11am and 5pm and we want the artist to be present in the space as much as possible during these times (ideally 4 days per week), between Wednesday 5th June and Sunday 7th July. However, working patterns can be negotiated to accommodate caring responsibilities and other commitments. We also welcome applications from partnerships or groups of artists who may wish to share the residency.

## Fee

£5,000 (20 days at £250 p/d) plus £1,500 materials/production budget. (N:B: there is an additional budget for the community events programme).

## How to apply

This opportunity is open to artists who are currently based in Birmingham and the surrounding areas.

To apply for the residency, please email the following information to [info@feedproject.art](mailto:info@feedproject.art) by **5pm on Wednesday 7th February**.

1. A Word document or PDF with the following information:

Your full name

Your email and phone number

Your postcode

An expression of interest (no more than 500 words), which gives an overview of your practice, explains why you are interested in this opportunity and describes how you would approach the residency.

2. A CV and up to 5 images of your work, or a link to your website/professional social media account.

3. Complete an online [Equal Opportunities Monitoring Form](#)

**Interviews will take place during the week beginning 26th Feb.**

## Contact

More information about Feed can be found at [www.feedproject.art](http://www.feedproject.art) and you can email Elaine Speight at [info@feedproject.art](mailto:info@feedproject.art) with any questions about the residency, including any access requirements or support that you may need to complete this application.

The Feed residency and tour are supported by Arts Council England, Birmingham City Council, Ikon and University of Central Lancashire.

## Equal Opportunities

Ikon is an equal opportunities organisation and welcomes applications from all sectors of the community. In its management structure and as an employer, Ikon is pledged to

ensure equal opportunities for all, regardless of age, race, gender, disability, marital status or sexual orientation.

The University of Central Lancashire believe in helping people to seize every opportunity to flourish in education, at work and for life. Our ethos is respect for all. We believe it is our collective responsibility to make sure that everybody is treated equally and has equality of opportunity.