

Ikon Activity Pack

KS2

Ikon's activity packs are designed for creative learning at school or home. Inspired by Ikon's exhibition by [Carlo Crivelli](#).

Created by artist [Farwa Moledina](#), they include questions for thinking and talking about art in relation to other subjects, including global cultures and environments.

Share your creations with learning@ikon-gallery.org or via social media [@ikongallery](#) [#ikongallery](#).

IKON



Supported using public funding by
**ARTS COUNCIL
ENGLAND**



Birmingham
City Council

SSW ART
EST. 1984



Carlo Crivelli

Born in Venice, Italy, c.1430, Carlo Crivelli painted Christian subjects, including scenes from the Bible. His paintings are like windows onto the world, often including plants, flowers and animals as symbols. He used mathematics and geometry to represent objects in three-dimensional space, painted to appear solid and real, on a flat surface. His work is an example of trompe-l'oeil – a French word that translates as 'tricking the eye'. Crivelli was part of the Italian Renaissance – another French word meaning 'rebirth' – a period in history between the Middle Ages and modern times.

Key words and themes: Renaissance, Gothic, painting, geometry, perspective, trompe-l'oeil (optical illusion), sculptural relief, symbolism.

Method: Painting.

Materials: Tempera, panel, gold leaf.

Related artists: Giotto, Antonio Vivarini, Bartolomeo Vivarini, Giovanni Bellini, Michelangelo, Titian, Audrey Flack, Susan Collis.



Installation view, Carlo Crivelli, *Shadows on the Sky* (2022), Ikon Gallery



Saint Catherine of Alexandria
(c. 1491–1494)

Take a [3D tour of the exhibition](#)

Look at *Saint Catherine of Alexandria*.

Describe the painting. What colours, shapes and objects can you see?

What is Saint Catherine of Alexandria wearing and why do you think this is significant?

Saints feature in Crivelli's work. What is a saint and what qualities do they have? Can you think of a different saint in Christianity or another faith?

Can you name the religious leaders of different faiths e.g. imam (Muslim) and guru (Sikh)?



The Vision of the Blessed Gabriele
(c. 1489)

Crivelli often used plants, flowers and animals as symbols in his paintings. Symbols are usually objects which represent something else.

Look at *The Vision of the Blessed Gabriele*.

What objects can you see and what might they symbolise?

What does the main figure's clothing tell you about them?

What is happening to that figure?

Does this feel like a scene from our world or a different world?

Portrait Drawing

Crivelli often painted religious figures who were considered to be important. Draw a picture of someone important in your life. This could be a parent, a sibling, a best friend or a teacher. Add in details and symbols that reflect the qualities of this person.

You will need: Paper, pencil.

1. Think about an important person in your life who you will draw.
2. Write different details and symbols that reflect their qualities on a piece of paper.
3. Make a drawing of this important person, including the details and symbols.

BROTHER
HAPPY - SUN
FUN - COLOURFUL CLOTHES
SMART - BOOKS
FRIENDLY - T-SHIRT GREETING



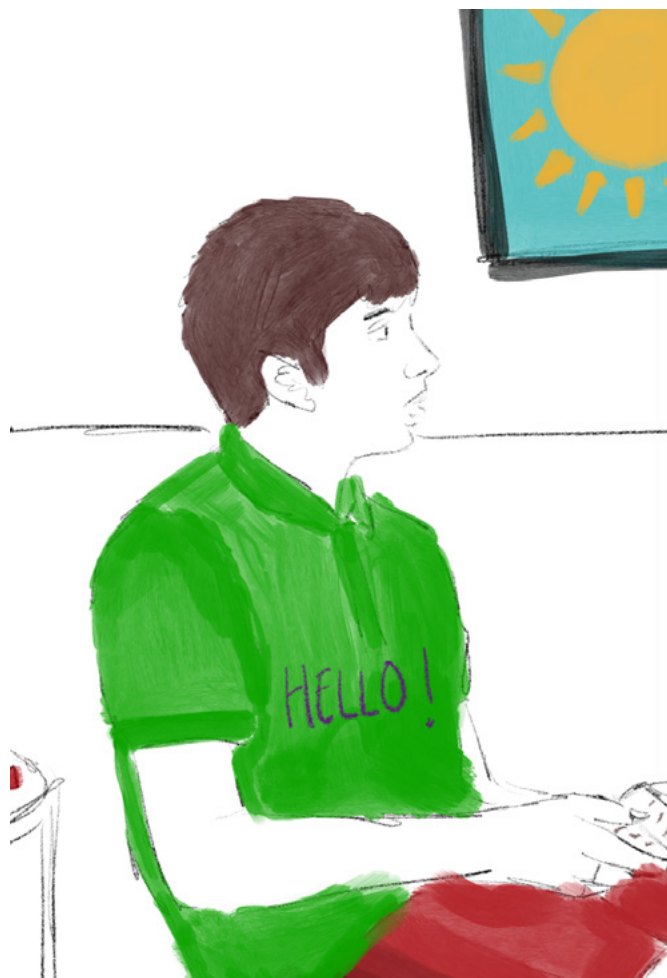
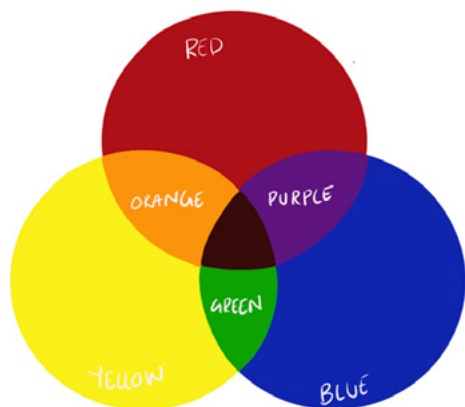
Paint Mixing

Crivelli used tempera paint which is made when pigment is mixed with a substance like egg yolk or oil.

Thinking about how Crivelli mixed his pigments, mix the three primary paint colours to make new colours. Paint these onto your drawing.

You will need: Paper, paint, paintbrushes, your drawing of an important person.

1. Mix the three primary paint colours to create new colours.
2. Add colour to your drawing.



Share your artworks

We invite everyone to exhibit their artworks in their homes or classrooms and share them with us on social media #ikongallery or email learning@ikon-gallery.org

Ikon Gallery
1 Oozells Square, Brindleyplace
Birmingham B1 2HS
+44 (0) 121 248 0708 / ikon-gallery.org

Please consider making a donation for this free resource. Ikon is a registered charity and your support helps us with everything we do.

Ikon is supported using public funding by Arts Council England and Birmingham City Council. Ikon's family programme is supported by Cass Art. Ikon Gallery Limited trading as Ikon. Registered Charity no.528892.