



# Ikon Activity Pack

## KS1

Ikon's activity packs are designed for creative learning at school or home. Inspired by Ikon's exhibition by [Carlo Crivelli](#).

Created by artist [Farwa Moledina](#), they include questions for thinking and talking about art in relation to other subjects, including global cultures and environments.

Share your creations with [learning@ikon-gallery.org](mailto:learning@ikon-gallery.org) or via social media [@ikongallery](#) [#ikongallery](#).

**IKON**



Supported using public funding by  
**ARTS COUNCIL  
ENGLAND**



**Birmingham**  
City Council

**SSS ART**  
EST. 1984



# Carlo Crivelli

Born in Venice, Italy, c.1430, Carlo Crivelli painted Christian subjects, including scenes from the Bible. His paintings are like windows onto the world, often including plants, flowers and animals as symbols. He used mathematics and geometry to represent objects that appear to be solid and real. Crivelli was part of the Italian Renaissance – a period in history between the Middle Ages and modern times.

**Key words and themes:** Renaissance, Gothic, painting, geometry, perspective, trompe-l'oeil (optical illusion), sculptural relief, symbolism.

**Method:** Painting.

**Materials:** Tempera, panel, gold leaf.

**Related artists:** Giotto, Antonio Vivarini, Bartolomeo Vivarini, Giovanni Bellini, Michelangelo, Titian, Audrey Flack, Susan Collis.



Installation view, Carlo Crivelli, *Shadows on the Sky* (2022), Ikon Gallery

Take a [3D tour of the exhibition](#)

**Look at *The Annunciation, with Saint Emidius*.**

What objects do you recognise in the painting?

What shapes and patterns can you see?

Can you describe what the people are doing in the painting?

Does this feel like a scene from our world or a different world?



*The Annunciation, with Saint Emidius* (1486)

**Crivelli often used plants, flowers and animals as symbols in his paintings. Symbols are usually objects which represent something else.**

**Look at *The Vision of the Blessed Gabriele*.**

What life forms can you spot in the painting?

What might the tree or birds symbolise?

What is the man doing in the painting?

What story do you think the artist is telling?



*The Vision of the Blessed Gabriele* (c. 1489)

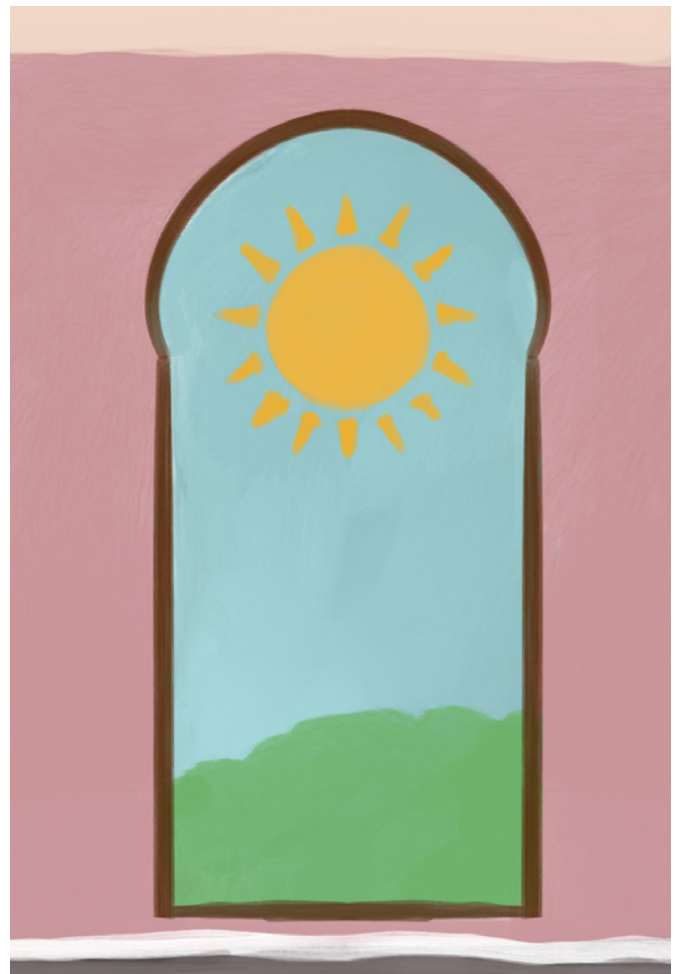
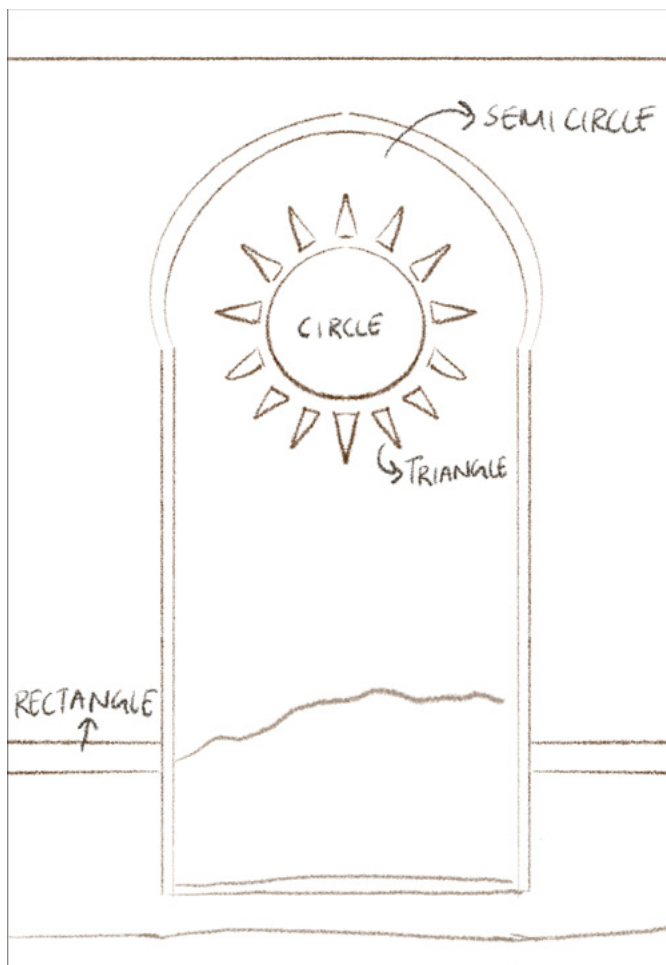


# Geometric Drawing

Make a painting inspired by Crivelli's use of geometry with shapes including semi-circles, circles and rectangles. You could paint an indoor scene, like the one in *Saint Catherine of Alexandria* (c. 1491-94), or an outdoor scene, like the one in *The Vision of the Blessed Gabriele* (c.1489).

**You will need:** Paper, pencil, paint, paintbrush, ruler.

1. Make a drawing with different shapes. Here, triangles, circles, semi-circles and rectangles have been used.
2. The window in this drawing is inspired by the archway in *Saint Catherine of Alexandria*. Think about the shapes in Crivelli's paintings. Can you use some of them in your drawing?
3. Using a paintbrush, add paint to your drawing.



# Symbolism

Add symbols to your geometric painting to express how you feel today. For example, if you feel hopeful you could add a rainbow. If you feel tired you could paint grey clouds. If you feel happy you could paint flowers.

**You will need:** Paper, pencil, paint, paintbrush.

1. Think about how you feel today. Write down your feelings on a piece of paper.
2. What symbols might describe these feelings? Write these down on your piece of paper.
3. Draw and paint the symbols onto your painting.

HAPPY - FLOWERS

PEACEFUL - PLANTS

ADVENTUROUS - BIRDS



# Share your artworks

We invite everyone to exhibit their artworks in their homes or classrooms and share them with us on social media #ikongallery or email [learning@ikon-gallery.org](mailto:learning@ikon-gallery.org)

**Ikon Gallery**  
**1 Oozells Square, Brindleyplace**  
**Birmingham B1 2HS**  
**+44 (0) 121 248 0708 / [ikon-gallery.org](http://ikon-gallery.org)**

Please consider making a donation for this free resource. Ikon is a registered charity and your support helps us with everything we do.

Ikon is supported using public funding by Arts Council England and Birmingham City Council. Ikon's family programme is supported by Cass Art. Ikon Gallery Limited trading as Ikon. Registered Charity no.528892.