



Ikon Activity Pack KS4

Ikon's activity packs are designed for creative learning at school or home. Inspired by Ikon's exhibitions by [Betsy Bradley](#) and [James T. Hong](#).

Created by artist Haseebah Ali, they include questions for thinking and talking about art in relation to other subjects, including global cultures and environments.

Share your creations with learning@ikon-gallery.org or via social media [@ikongallery](#) [#ikongallery](#).

IKON



Supported using public funding by
**ARTS COUNCIL
ENGLAND**



**Birmingham
City Council**



James T. Hong

Animal

James T. Hong is a Taiwanese-American artist and filmmaker. His work encourages viewers to question their own values, attitudes and beliefs, and how our morals and ethics shape our actions. The exhibition at Ikon, titled *Animal*, features two film works, presenting humans and animals as similar, adaptable species that are equally capable of good and evil acts. The works also reflect the experiences of marginalisation and ostracization felt by global communities and how they have been intensified by the Covid-19 pandemic. These are experiences that Hong identifies with as a first-generation East Asian who grew up in the United States.

Key words and themes: Morality, culture, identity, migration, marginalisation, ostracization.

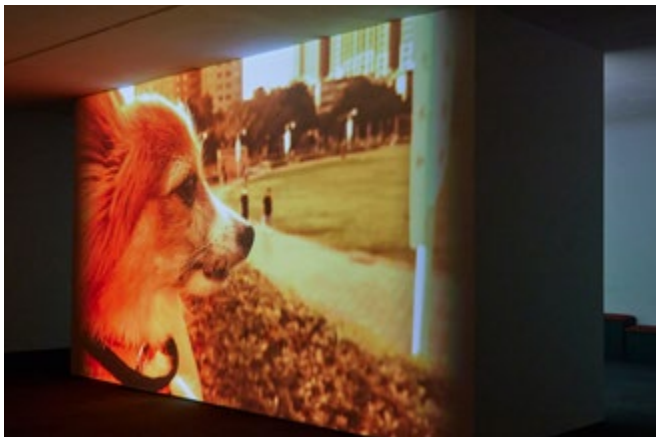
Method: Film, photography and sound.

Materials: Camera and microphone.

Related artists: Francis Alÿs, Craig Baldwin, Yin-Ju Chen.



Installation view, James T. Hong, *Animal* (2021)



De Anima (2021)

Watch the trailer [James T. Hong : Animal](#).

James T. Hong's films present different points of view, often using animals to convey human emotions and behaviours. This invites us to think about the different influences that shape our ways of thinking.

How are the animals reflecting human emotions and behaviours?

What can influence the way that we think and behave?

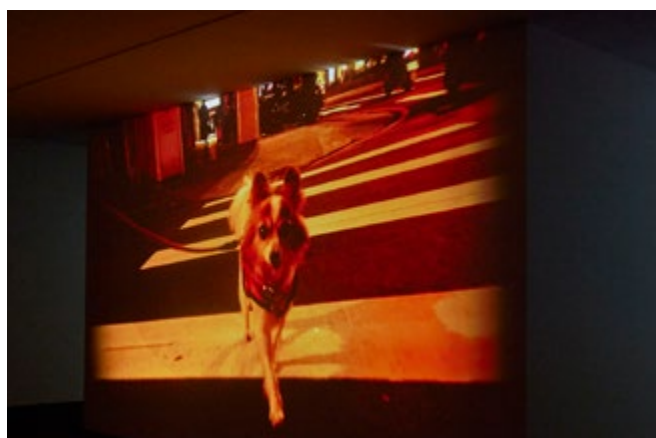


The Duck of Nature/The Duck of God (2010)

In *The Duck of Nature/The Duck of God* (2010), a radio-controlled duck is snubbed by other birds on the canals of Amsterdam. The film reflects the experience of the 17th-century philosopher Baruch Spinoza, who was rejected by his community for having different beliefs.

How does the film portray Spinoza's experience?

What does the film highlight about an experience of migration? What can we learn from it?



De Anima (2021)

Contrast collage

The artist sometimes uses colour to illustrate contrasting ideas and assumptions. Create a collage, using different colours, drawing on themes explored in the artist's films.

You will need: Magazines, craft knife, glue.

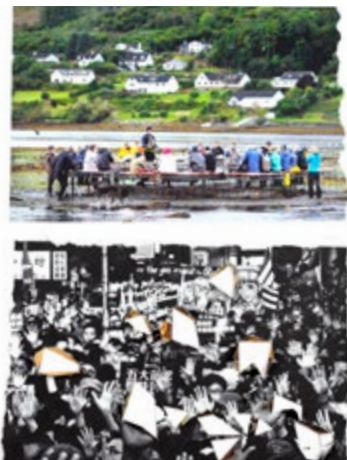
1. Look through some magazines and pick out two images: one black and white, and the other colour. You could include images that show crowds or people.



2. Cut out your images - use scissors or rip the paper. Next, choose an area of the black and white image to cut out. Cut two sides of a triangle, creating a point. Pull back the point and fold to create a hole. Continue this process a number of times.



3. As you work, place the coloured image underneath the black and white image to see what sections will be revealed through the holes. Continue cutting into your black and white image until you're happy.



4. Once you've finished cutting, apply glue to the back of the black and white image and stick it on top of the colour image to complete your collage.



Betsy Bradley

Chasing Rainbows

Betsy Bradley creates large-scale, bold and colourful paintings made on translucent fabrics. The artist brings together sculptural elements in the paintings, often using found objects to create painting supports, improvised structures and the mark-making tools that she makes herself. Bradley is inspired by Eastern traditions of Wabi Sabi and Mono-ha which explore the beauty of imperfections in nature and the properties of different materials. The artworks reflect the artist's instinctive approach to making:

"I see my work as an invitation to the present moment – an escape as well as a grounding – which enables the viewer to let go." Betsy Bradley

Key words and themes: Sculptural, mark-making, impulse, Wabi Sabi, Mono-ha, light.

Method: Painting, sculpture, printmaking.

Materials: Paint, fabric, canvas, wood, found objects.

Related artists: Claire Barclay, Bernice Bing, Giorgio Griffa, Masahiro Suda, Alexis Teplin, Lee Ufan.



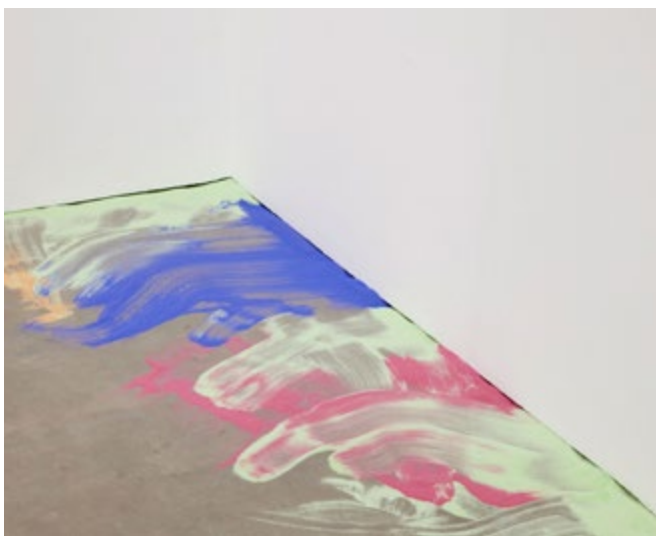
Installation view, Betsy Bradley, *Chasing Rainbows* (2021)



Totem (2020)

Take a [3D tour of the exhibition](#).

Watch the film [Introducing Betsy Bradley](#).



Pure Shores (2021)

Betsy Bradley paints on translucent fabrics, including voile, muslin, organza and dustsheets, which reflect the light in different ways.

How do the translucent fabrics affect the way you see the paintings, compared to an opaque canvas?

How does the artist use fabrics to create sculptural works?



Above the Clouds, Beneath the Trees (2021)

The artist incorporates practices from Wabi Sabi and Mono-ha traditions in her artworks. She handmakes paintbrushes and tools, such as brooms, to make marks. The traditions celebrate simplicity, nature and the relationship between the artist and materials.

How does this approach to painting change the way you create artworks?

Look at *Above the Clouds, Beneath the Trees* (2021). How has the artist included the traditions of Wabi Sabi and Mono-ha in this work?

Collagraph printing

Create a collagraph inspired by printmaking techniques and abstract forms in Betsy Bradley's artwork.

You will need: Cardboard, string, scissors, PVA glue, paint brush.

1. Cut out a rectangular piece of cardboard using scissors. It should be roughly A6 size.



2. Cut string and cardboard and arrange shapes into a design you're happy with. Glue the pieces down to create your collagraph plate.



3. Once the glue is dry, evenly brush some paint onto your collagraph plate.



4. Stamp your collagraph plate onto a piece of paper and press down before removing it. The collagraph design should be printed onto the paper. Continue experimenting with different designs.



Ikon Gallery
1 Oozells Square, Brindleyplace,
Birmingham B1 2HS
+44 (0) 121 248 0708 / ikon-gallery.org

Please consider making a donation for this free resource.
Ikon is a registered charity and your support helps us
with everything we do.

Ikon is supported using public funding by Arts Council
England and Birmingham City Council. Ikon's family
programme is supported by Cass Art. Ikon Gallery
Limited trading as Ikon. Registered Charity no.528892.

IKON